

Supplement 2 to 'The millipede genus *Solaenodolichopus* Verhoeff, 1924 (Diplopoda, Polydesmida, Paradoxosomatidae). 1. New genus diagnosis and redescriptions of named species'

Robert Mesibov  
26 February 2014

This document contains images of *Solaenodolichopus* types in alcohol and on slides.



Male syntype, *S. rubriventris*, AM KS.76506

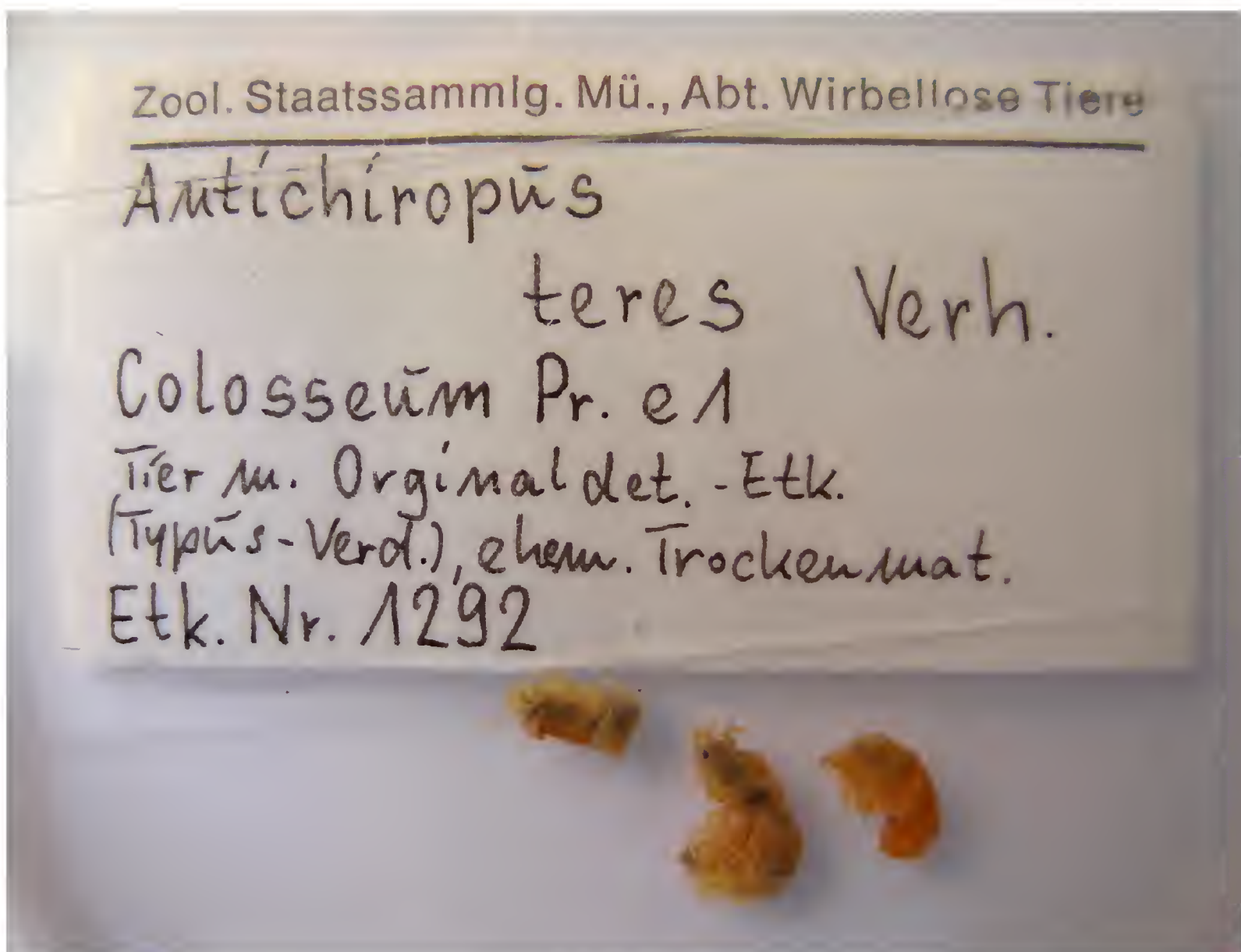
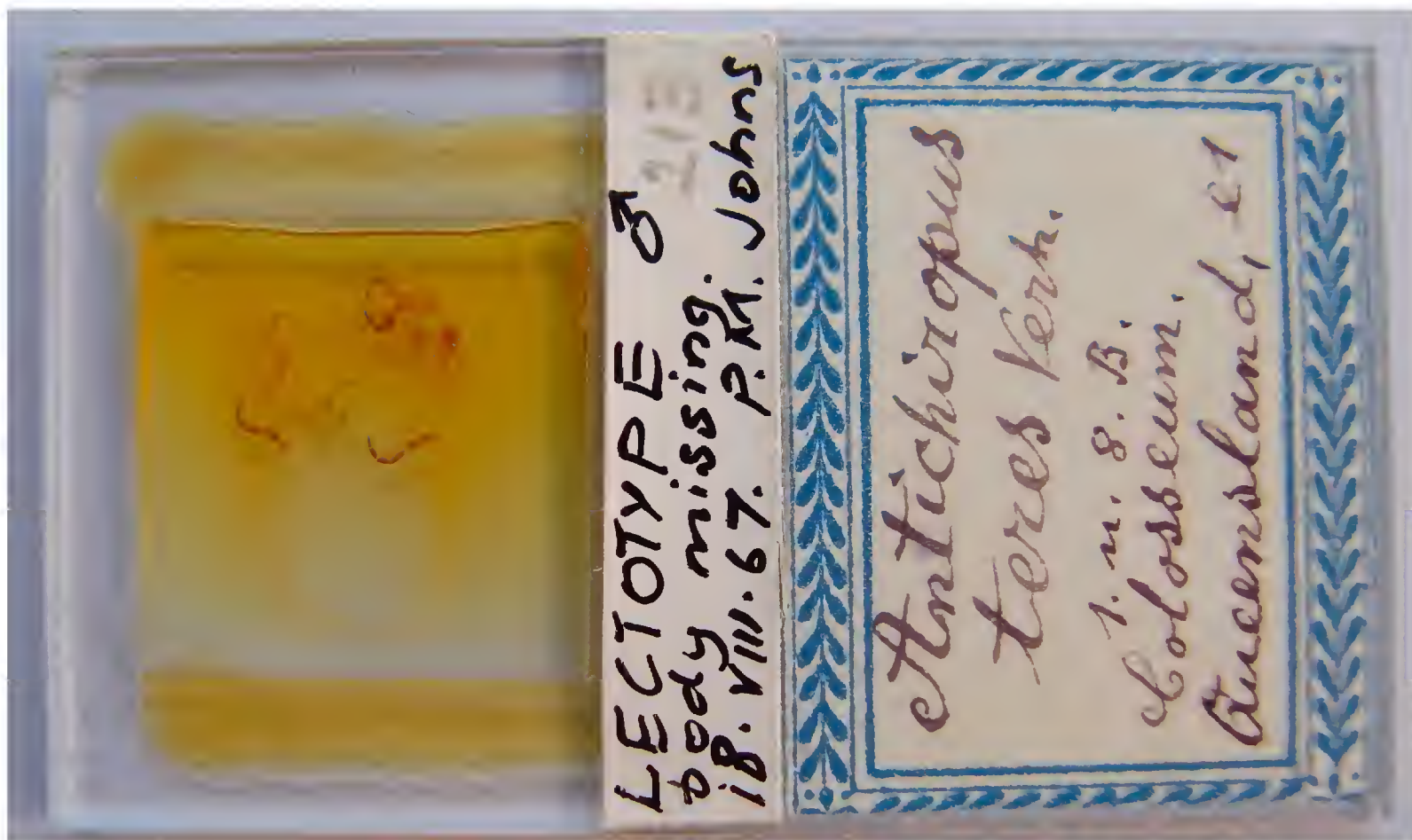


Female syntype, *S. rubriventris*, AM KS.76507

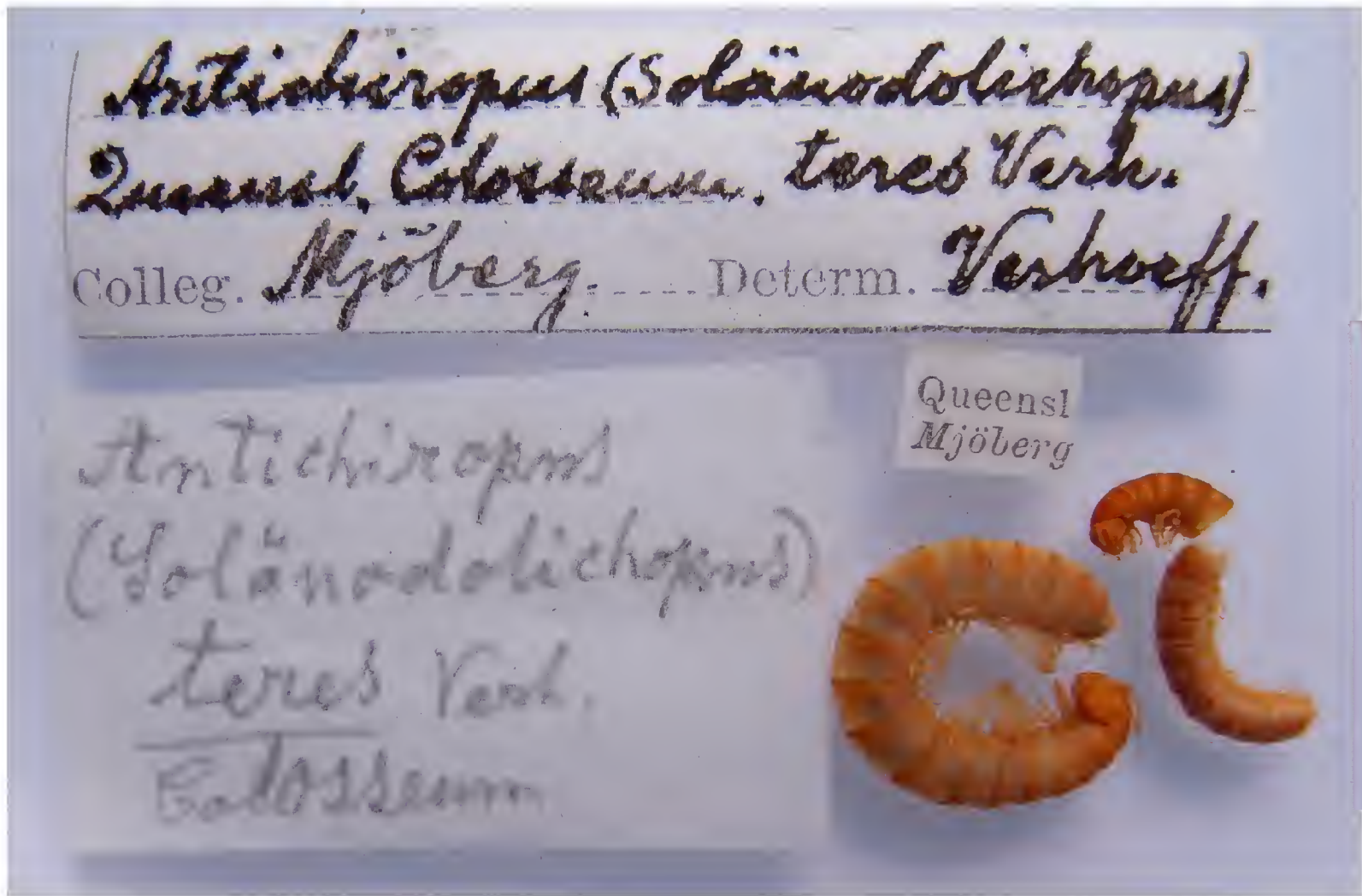


Lectotype, *S. sulcatus*, AM KS.76503



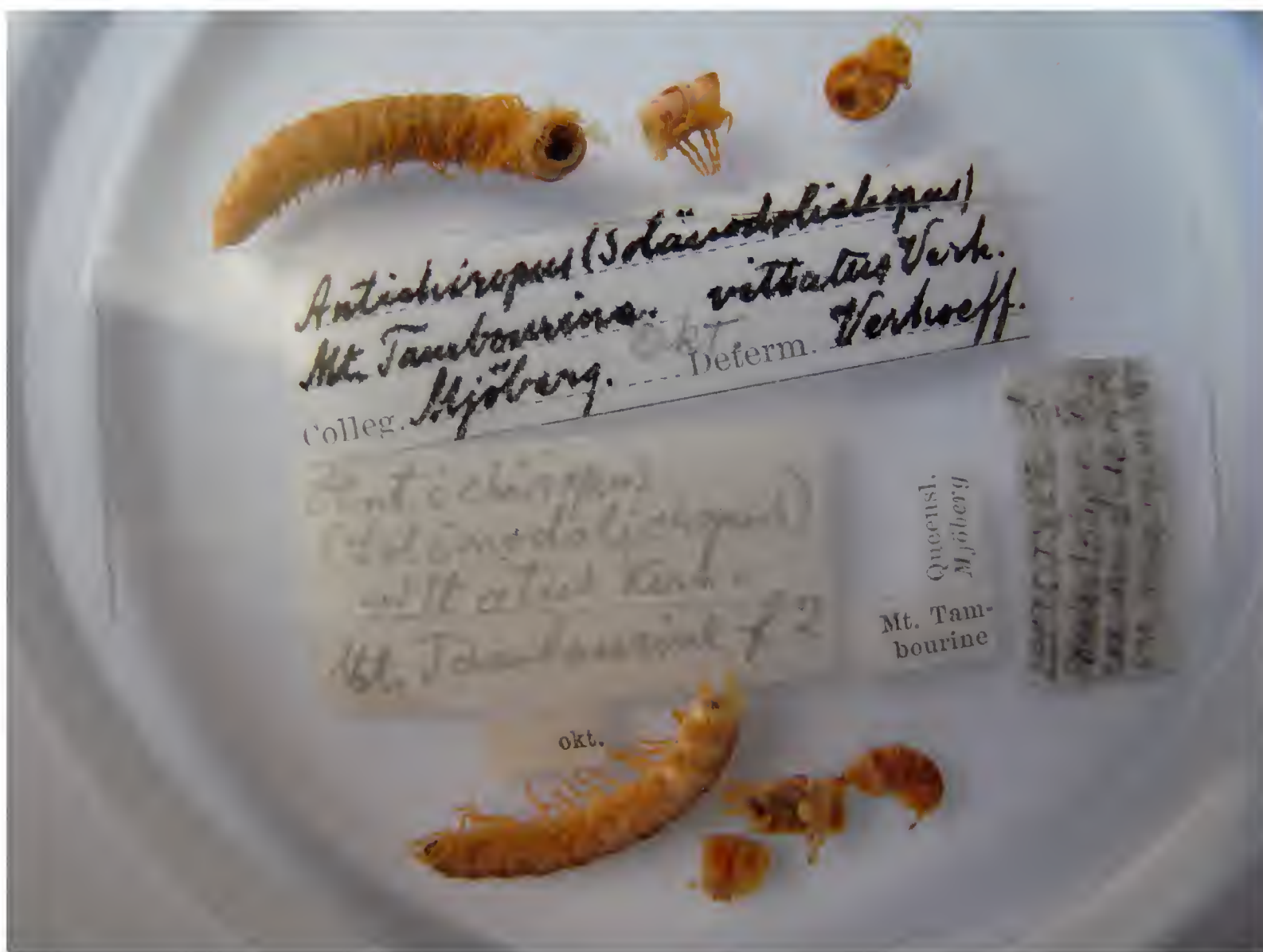
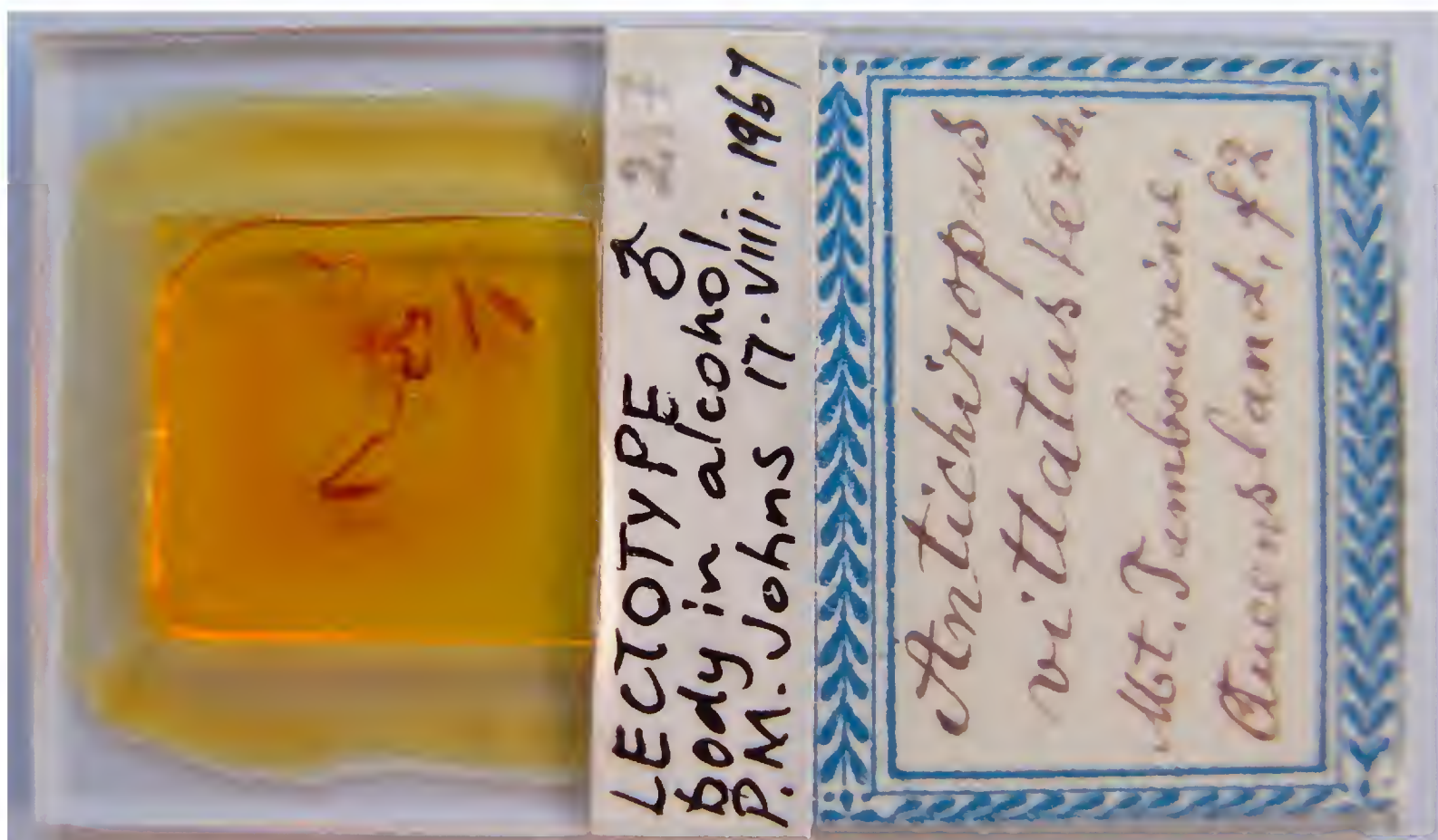


Lectotype, *S. teres*, slide NHRS KAS1000000005, alcohol ZSM A20052188



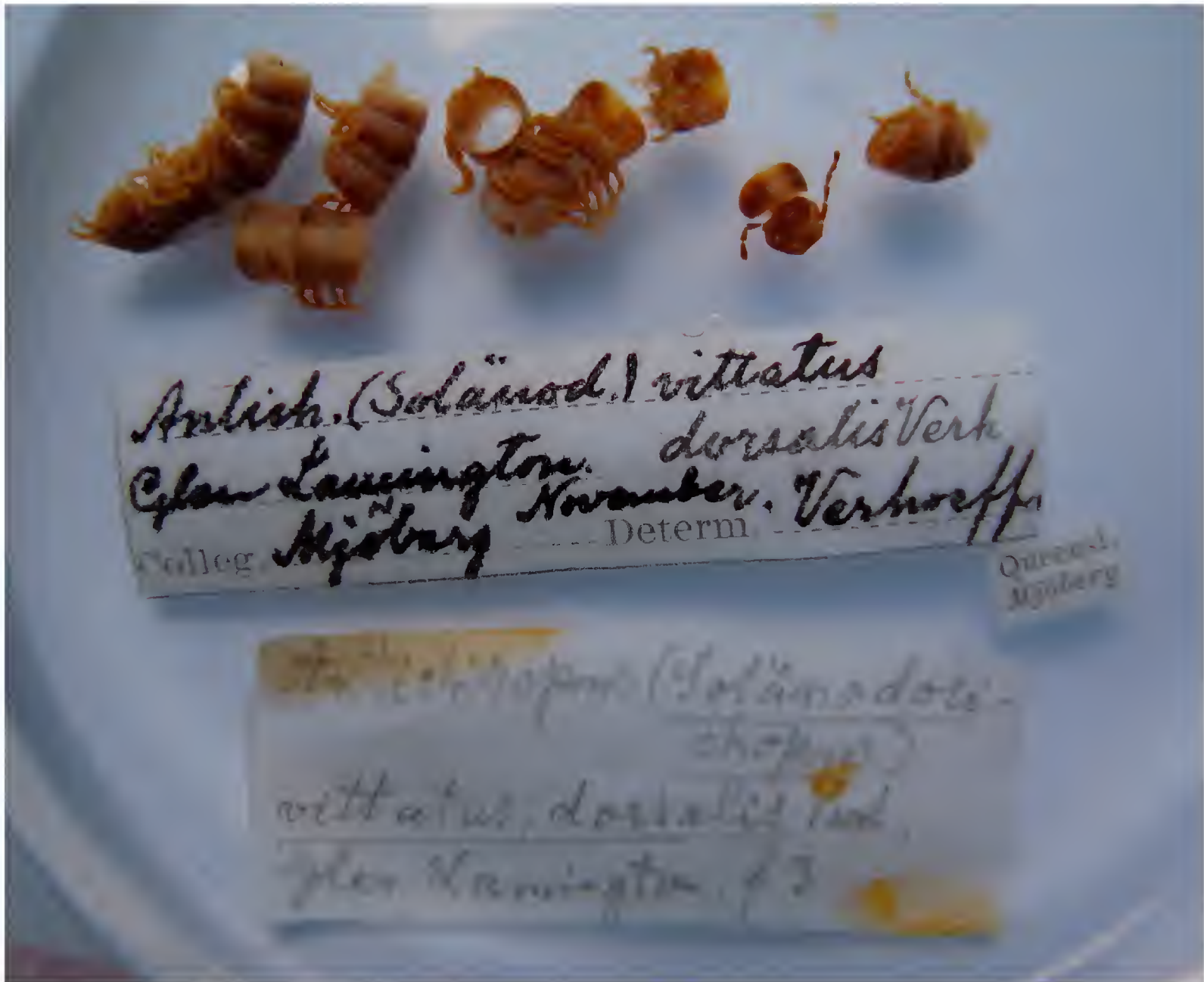
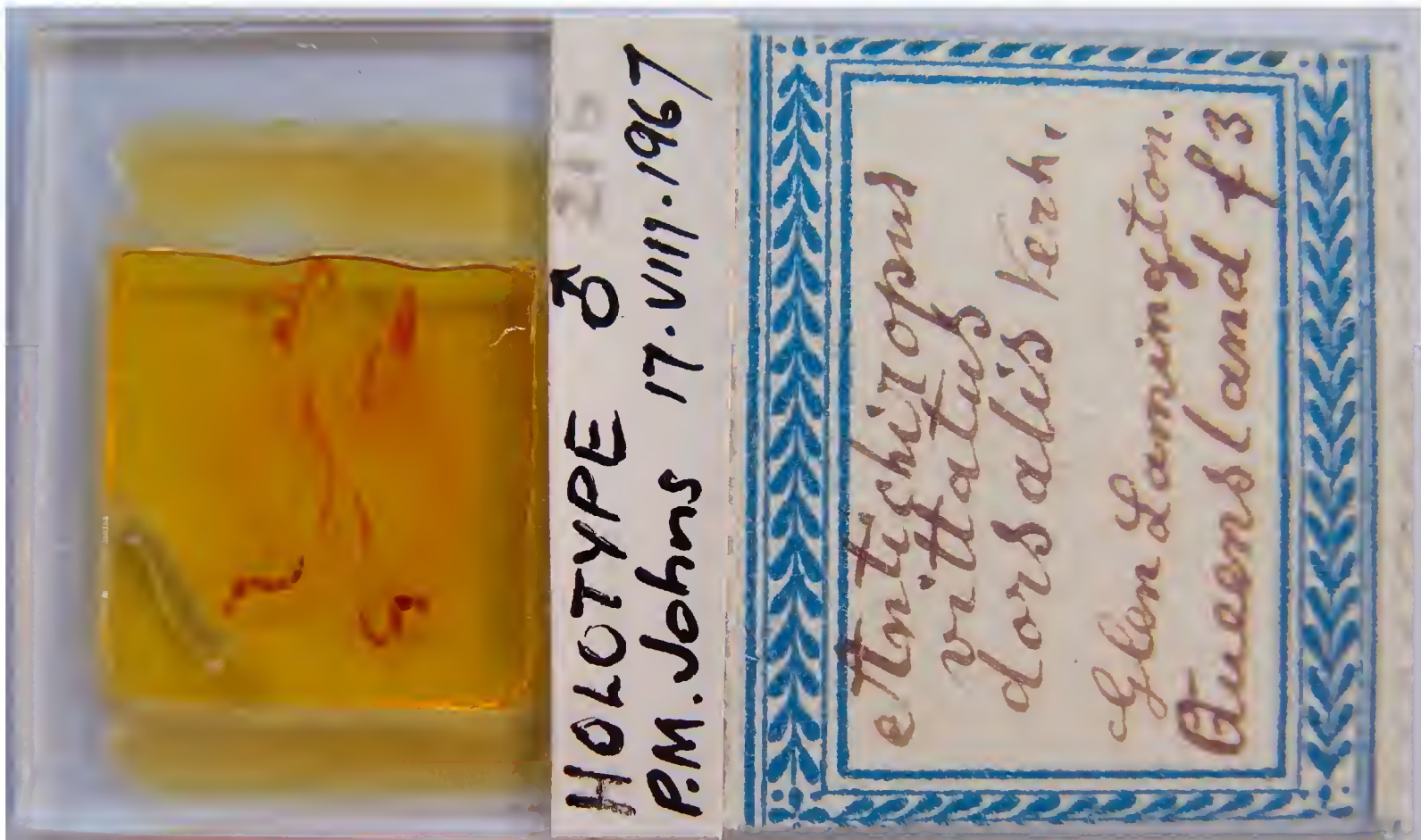
Paralectotype and juvenile, *S. teres*, NHRS KAS1000000007



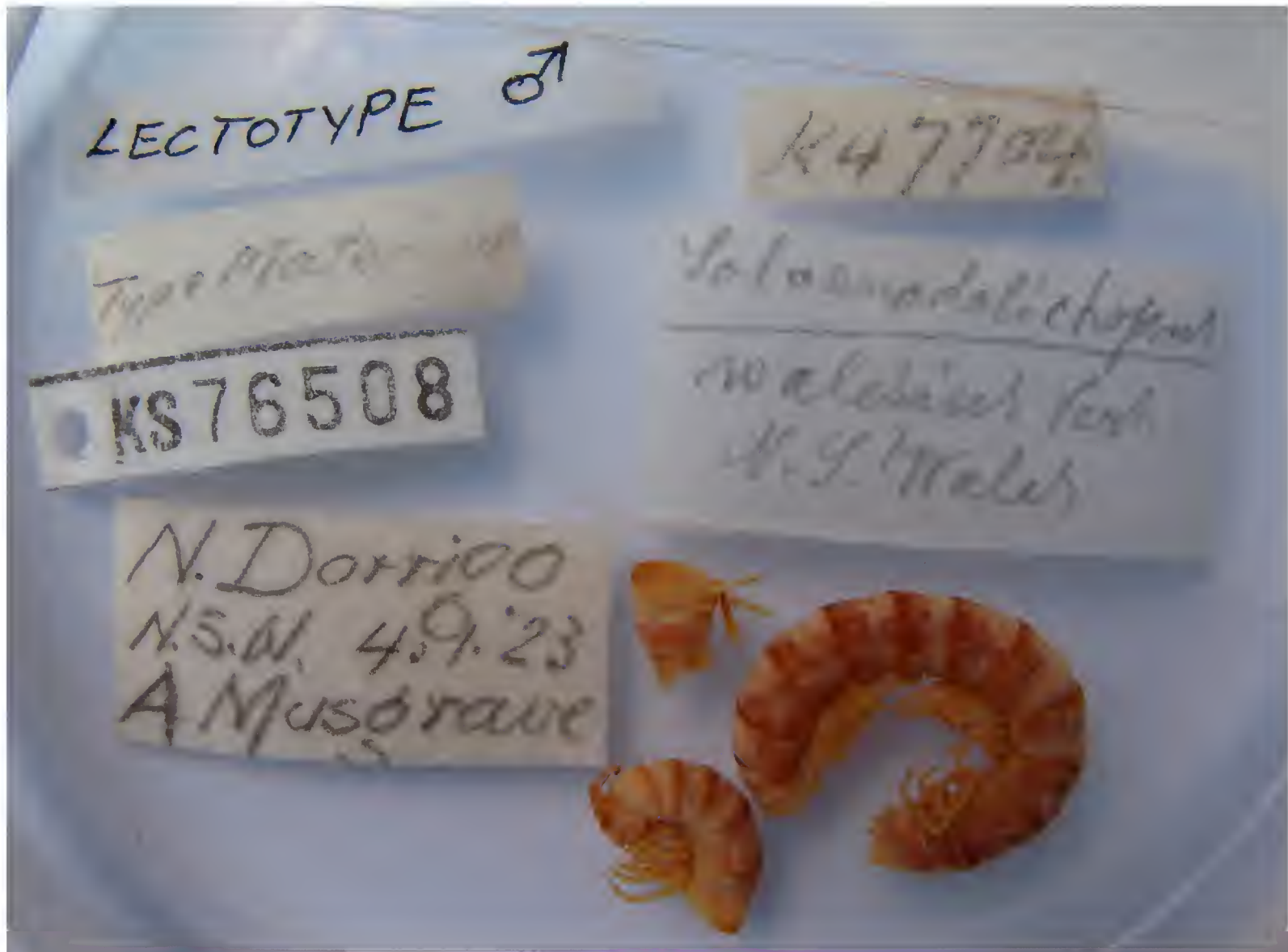


Lectotype, *S. vittatus*, slide NHRS KAS1000000004  
 Lectotype (bottom) and paralectotype (top), alcohol NHRS KAS1000000006



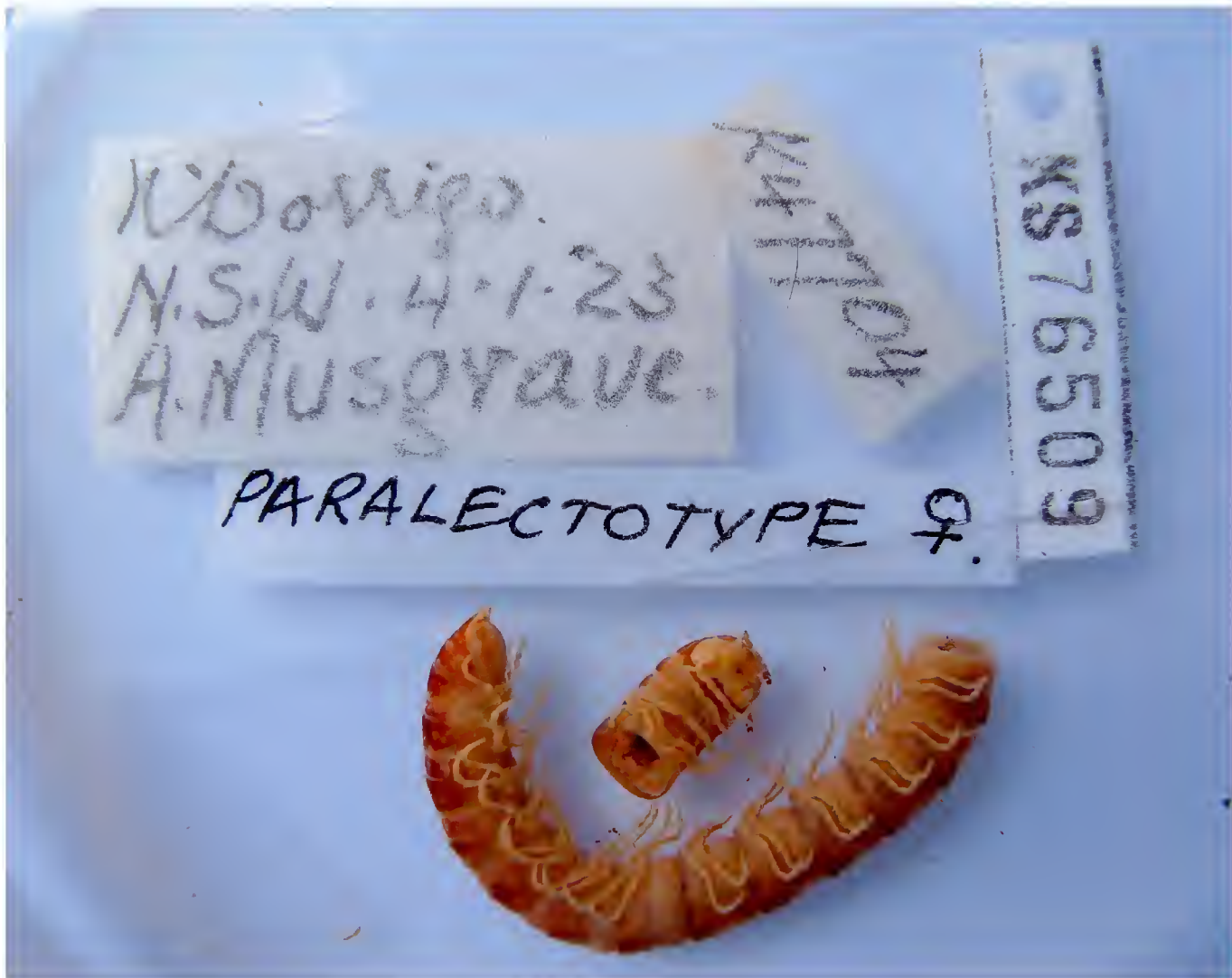


Holotype, *S. vittatus dorsalis*, slide and alcohol both NHRS KAS100000003

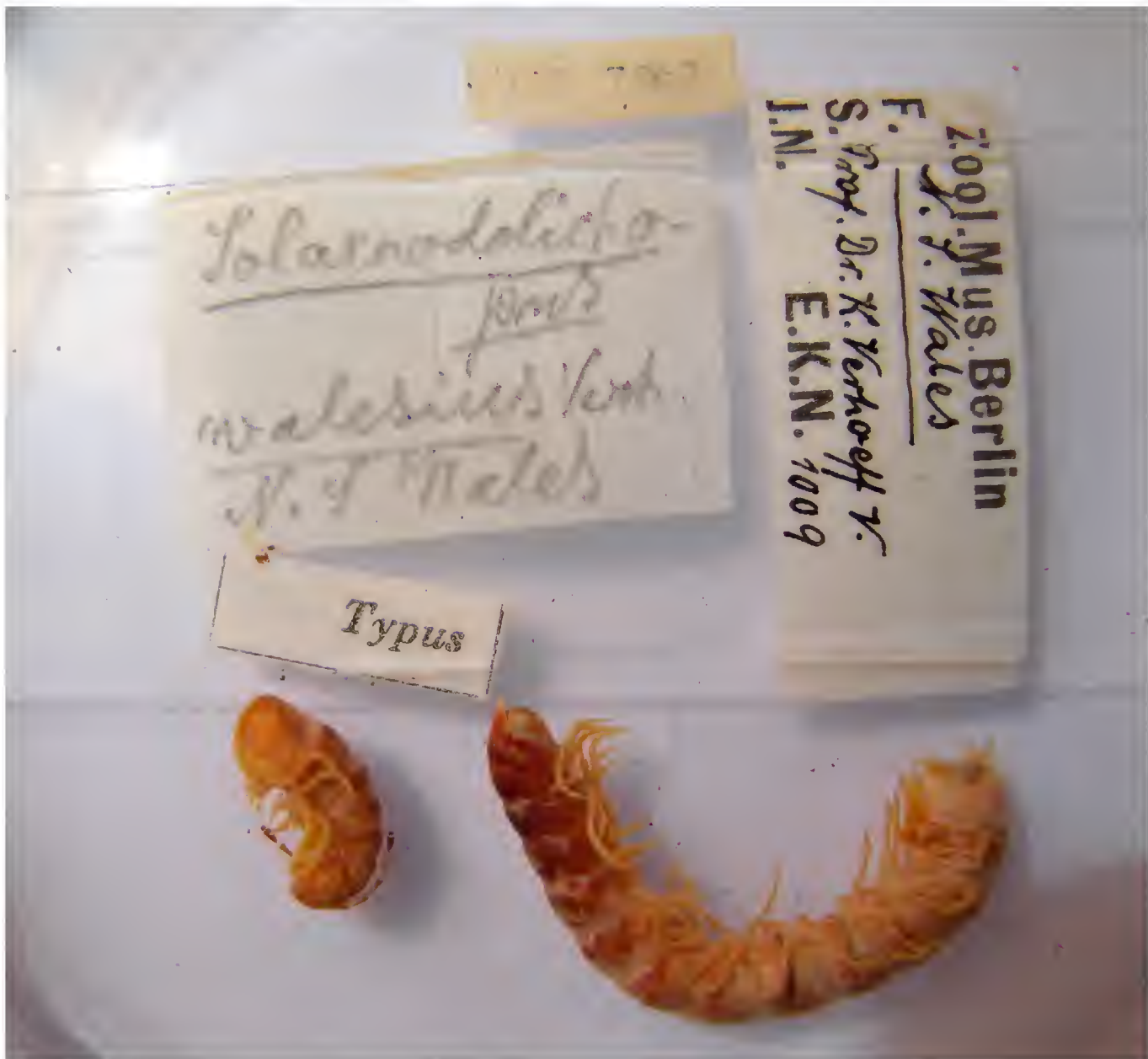


Lectotype, *S. walesius*, AM KS.76508





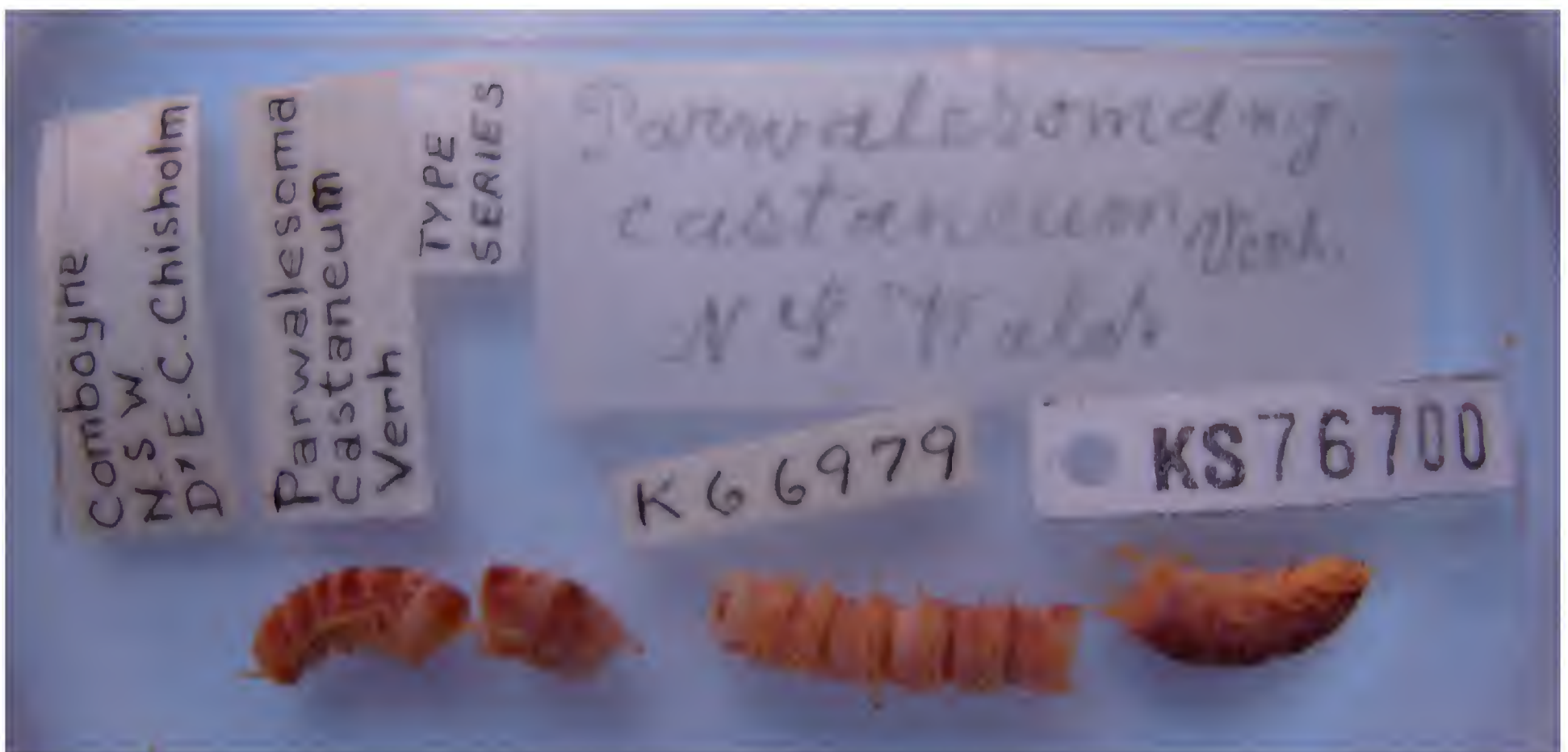
Paralectotype, *S. walesius*, AM KS.76509



Paralectotype, *S. walesius*, ZMB 7962



Lectotype, *Parwalesoma castaneum* (= *S. walesius*), ZMB 12652



Paralectotype, *Parwalesoma castaneum* (= *S. walesius*), AM KS.76700



Paralectotype,  
*Parwalesoma*  
*castaneum* (= *S.*  
*walesius*),  
 slide ZSM  
 A20033565, alcohol  
 ZSM 20052246  
 (male top, female  
 bottom)

